



E-newsletter #5 - January 2022

Thank you for expressing an interest in SR Connect high-speed fiber internet service and our fiber-to-the-home pilot projects.



Sign-ups in Pilot Areas Progressing

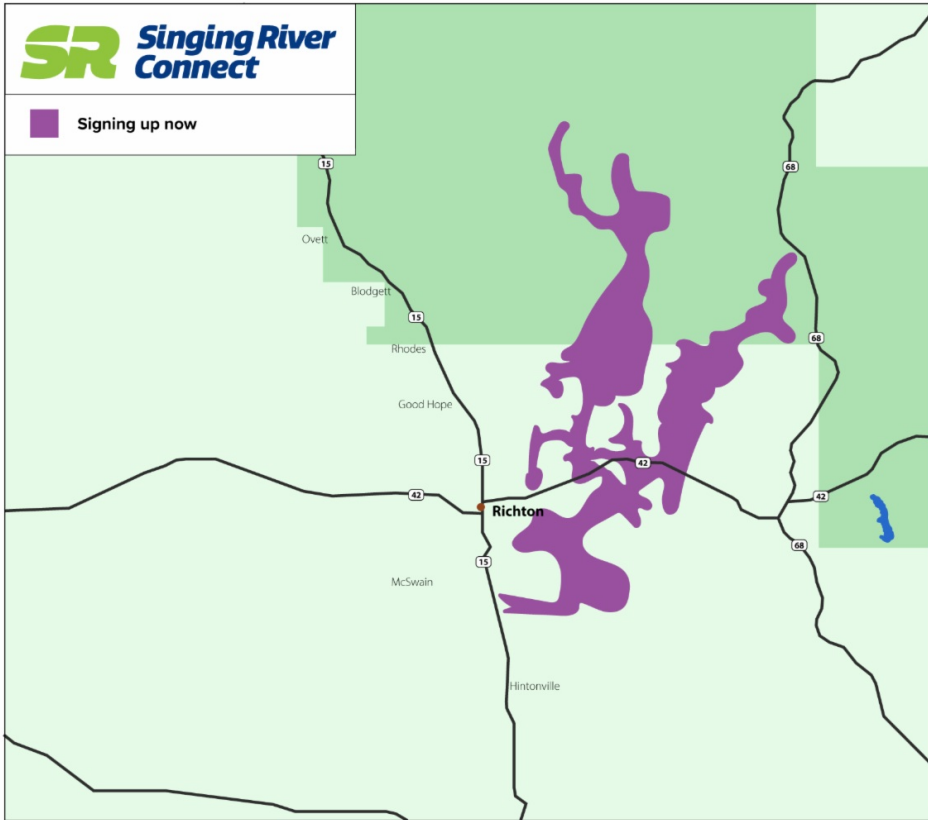
We are opening fiber sign-ups in more of the pilot areas! The maps below show current fiber sign-up areas in purple.

- Prospective subscribers in the **Brewer substation Union Road feeder pilot area** can now sign up for SR Connect fiber-to-the-home service! This does not currently include those located in the U.S. Forest Service land.
- SR Connect is also signing up subscribers in the **Aleco substation's Highway 57 North feeder pilot area!** This is the Vestry community in Jackson County.
- The **Brewer substation's Cochran Road and Camp 8 Road feeders** are also open for service, outside the U.S. Forest Service land.

If you are in one of the pilot areas listed above and are eligible to sign up:

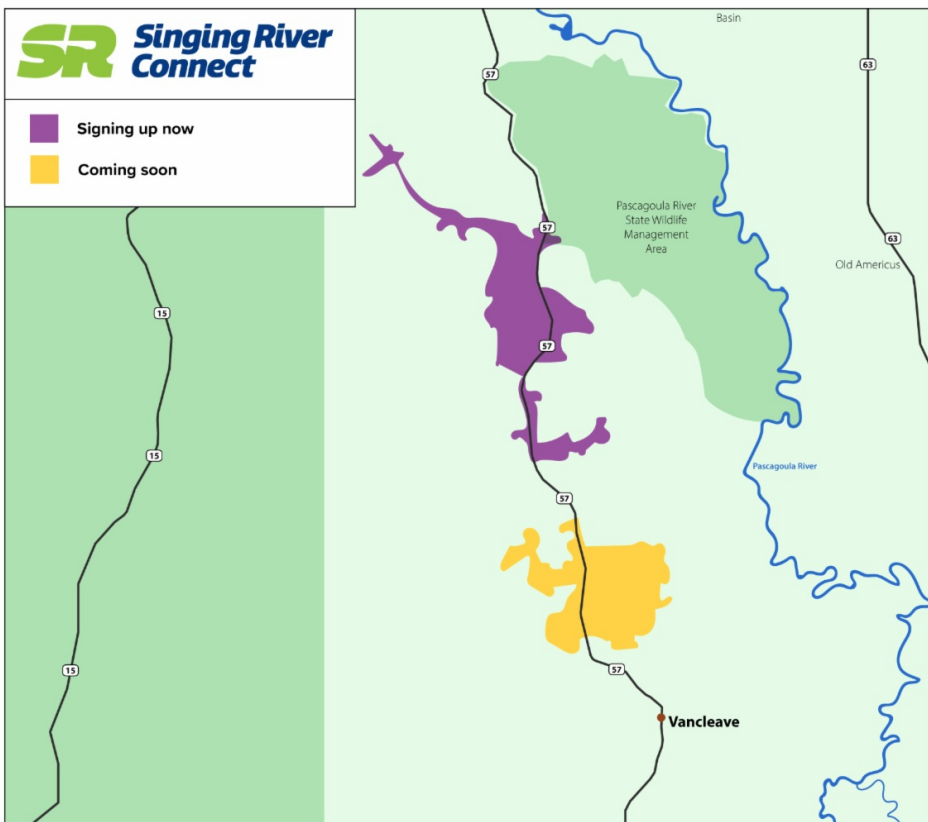
1. Call **877-272-6611** to speak to a SR Connect fiber customer service representative.
2. Complete and return your service agreement and make your initial payment.
3. Once that is complete, they will schedule your drop installation (fiber service constructed to your home or business).
4. The final step will be scheduling a home installation once the drop installation is complete.

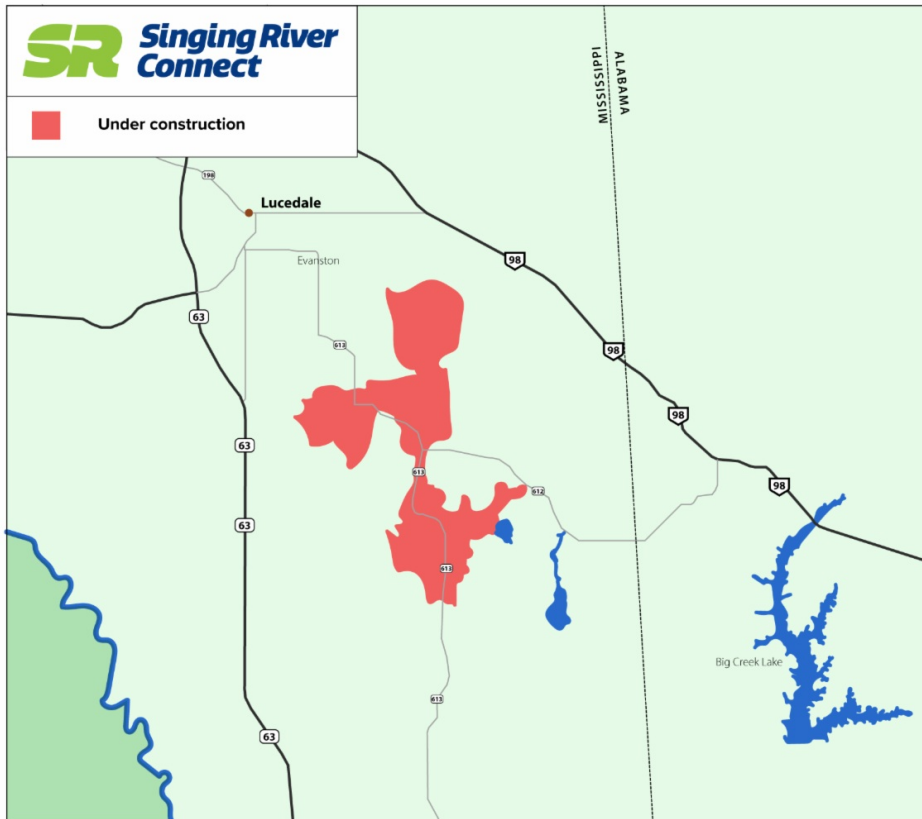
■ Signing up now



■ Signing up now

■ Coming soon





U.S. Forest Service Permit Received

Great news! SR Connect received its permit to work on U.S. Forest Service land. This permit allows contractors to proceed with the seven steps of fiber construction within the Brewer substation pilot area's Camp 8 Road and Union Road feeders.

The U.S. Forest Service land areas in the **Camp 8 Road feeder** and **Union Road feeder** are in **Step 3 - Fiber Construction**. Fiber sign-ups and drop installs will occur once construction is complete.

Amazon Echo Show Giveaways

Congratulations to **Dee Myrick** who won an Amazon Echo Show 5 in the Brewer substation - Cochran Road feeder drawing! All in this feeder who subscribed for SR Connect fiber internet service by January 12, 2022, were entered to win.



Those in the **Brewer substation's Camp 8 Road and Union Road feeders** who sign up for SR Connect fiber internet by **February 28, 2022**, will be entered into separate drawings for an Amazon Echo Show 5. Eligible subscribers will receive postcards and emails about this promotion.

2022
is your
year for
better
internet!



GET FREE INSTALLATION AND A CHANCE TO WIN AN AMAZON ECHO SHOW 5 WHEN YOU SIGN UP BY FEBRUARY 28!

Projected Dates for Fiber Construction



Note: These are *projected* dates and are subject to change due to weather and many other factors involved with starting and completing each step in the process.

Pilot Project 1 - Brewer Substation Area

All feeders in this area are in Step 7 - Scheduling Installations.

- Cochran Road feeder
- Camp 8 Road feeder
- Union Road feeder

The U.S. Forest Service land areas in the Camp 8 Road feeder and Union Road feeder are in Step 3 - Fiber Construction.

Pilot Project 2 - Aleco Substation Area

The Highway 57 North feeder is in Step 5 - Service Drops and Step 6 - Splicing.

The Lake-O-Pines feeder is in Step 3 - Fiber Construction.

Pilot Project 3 - Agricola Substation Area

The Highway 63 North feeder is in Step 3 - Fiber Construction.

The Movella feeder is in Step 3 - Fiber Construction.

SR Connect Fiber-to-the-Home Pilot Areas

These figures show progress and expressed interest in SR Connect's three pilot areas designated by Singing River Electric substation and feeder.

Singing River Electric's board of directors is monitoring the expressed interest inside and outside of the pilot areas along with scheduled installations in the pilot areas. Based on these results, the board will decide whether to expand fiber service to other areas and where.

Brewer Pilot Area	Aleco Pilot Area	Agricola Pilot Area
Cochran Road Feeder 74 home installations completed	Highway 57 North Feeder 83% expressed interests	Movella Feeder 71% expressed interests
Camp 8 Road Feeder 42 home installations completed	Lake-O-Pines Feeder 56% expressed interests	Highway 613 N. Feeder 73% expressed interests
Union Road Feeder 77 subscribers paid and completed service agreements		

8,216 interests expressed outside of the pilot areas

Construction Progress



The fiber hut at the Aleco substation in Jackson County is outfitted with racks to hold broadband equipment. This is SRC's second fiber pilot project area.



SRC contract crews hang fiber on Bennie Wall Road in George County. This is for the third fiber pilot project located in the Agricola substation area.

Why Hasn't SRE's Board of Directors Made a Decision to Expand Fiber Service?

The decision to expand SR Connect's fiber-to-the-home service beyond the pilot project areas **depends on the success of the pilots**. Once subscribers in all three areas are receiving fiber internet service, the board will be able to gauge their success. It will **most likely be 1st Quarter 2022** before the pilot projects are completed, barring no delays.

Contract crews are working safely and quickly to complete construction. This project not only takes time but also a great investment. The SCADA equipment and fiber pilot projects together cost nearly \$9 million. When you add in the fiber distribution ring connecting all SRE substations, offices and the SR Connect pilot areas, it totals more than \$15 million.

How is Fiber Different from Other Options?

CLICK THE PICTURE BELOW TO LEARN MORE



Search your address and express an interest in SR Connect fiber-to-the-home service if you haven't already done so. Encourage your family, friends and neighbors to do the same!

[SEARCH YOUR ADDRESS](#)



singingriverconnect.com
(877) 272-6611
contactus@singingriverconnect.com



Copyright (c) 2022 Singing River Connect