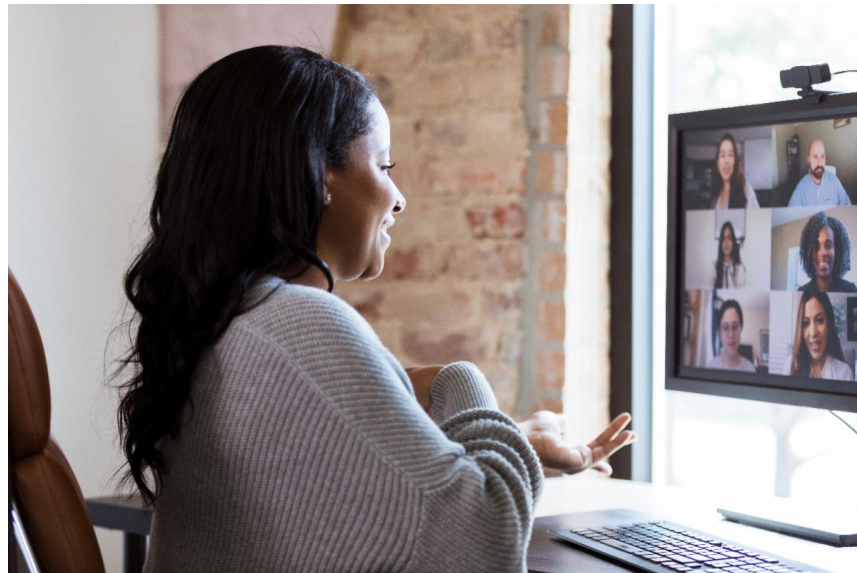




E-newsletter #2 - September 2021



## SR Connect's Fiber-To-The-Home Service

Work on SR Connect's pilot projects continues, and so does interest in SR Connect's high-speed fiber internet service. Thank you for expressing your interest! Below is information to keep you informed on our fiber-to-the-home pilot projects.

**1,121 (59%)**

Interests Expressed  
Inside Pilot Areas

**5,856**

Interests Expressed  
Outside of Pilot Areas

Singing River Electric's board of directors is monitoring the expressed interests inside and outside of the pilot areas along with scheduled installations in the pilot areas. Based on these results, the board will decide whether to expand fiber service to other areas and where.

**Search your address and express an interest in SR Connect fiber-to-the-home service if you haven't already done so. Encourage your family, friends and neighbors to do the same!**

## SR Connect's Fiber Construction Status



### Pilot Project 1 - Brewer Substation Area

Work in the Brewer substation's Feeder #3 is in **Step Four - Splicing**.

- Prospective subscribers in the Brewer substation's Feeder #3 area will receive a mailed postcard and an email in early October notifying them it is time to schedule fiber installation.

Work in the Brewer substation's Feeder #1 and Feeder #2 is in **Step 3 - Fiber Construction**.

- Progress in specific parts of the Brewer substation's Feeder #1 and #2 is delayed due to poles being located on U.S. Forest Service land.
  - Bringing fiber service to some homes will be delayed until approvals to work on U.S. Forest Service land are in place.
  - Prospective subscribers in Feeders #1 and #2 **outside** of the U.S. Forest Service land will receive postcards and emails about scheduling fiber installation in mid-to-late October or early November.

### Pilot Project 2 - Aleco Substation Area

Work in the Aleco substation area is beginning **Steps 1 and 2 - Make-Ready Engineering and Make-Ready Construction**.

Contract crews are inspecting poles and determining if poles need to be changed out for clearance or if current pole attachments need to be moved.

### Pilot Project 3 - Agricola Substation Area

Work in the Agricola substation area is expected to be in **Step 1 - Make-Ready Engineering** by December 2021.

Contract crews will conduct a pole-to-pole inspection and decide if poles need to be changed out or if existing pole attachments need to be modified.

## Construction Progress



SR Connect contractors prepare poles in the Brewer pilot area before running fiber.



Contractors string fiber in Richton for the Brewer substation pilot project.

## Why Hasn't SRE's Board of Directors Made a Decision to Expand Fiber Service?

The decision to expand SR Connect's fiber-to-the-home service beyond the pilot project areas depends on the success of the pilots. Once subscribers in all three areas are receiving fiber internet service, the board will be able to gauge their success. It will most likely be 1st Quarter 2022 before the pilot projects are completed, barring no delays.

Contract crews are working safely and quickly to complete construction. This project not only takes time but also a great investment. The SCADA equipment and fiber pilot projects together cost nearly \$9 million. When you add in the fiber distribution ring connecting all SRE substations, offices and the SR Connect pilot areas, it totals more than \$15 million.

## What's the Difference Between Internet and Wi-Fi?

[CLICK BELOW TO LEARN MORE](#)



singingriverconnect.com  
(877) 272-6611  
contactus@singingriverconnect.com



Copyright (c) 2021 Singing River Connect