



VIEW IN BROWSER



E-newsletter #11 - July 2022

Barton Agricola & Red Creek Church Feeders Now Open for Fiber Sign-ups!

SR Connect is **now signing up fiber subscribers** in George County's Barton Agricola and Red Creek Church substation feeders.

Barton Agricola

CALL NOW TO SIGN UP

877-272-6611



The Barton Agricola feeder includes Barton Agricola Road from Highway 613 to Beesley Road (but not including Beesley Road).*

Red Creek Church Road Feeder

CALL NOW TO SIGN UP

877-272-6611



The Red Creek Church Road feeder includes East Fire Department Road to Highway 612, Highway 612 to Red Creek Church Road, and Agricola Latonia Road to the CSX railroad tracks.*

*This is NOT an all-inclusive list of roads in the fiber phase. Eligible subscribers will receive a postcard and/or email when it is time to sign up. You can also call 877-272-6611 to inquire if you are located inside a current fiber phase in construction. The first steps after the call to sign up include completing the service agreement and making the first payment.

Fiber Hut Installed at Harleston Substation



A fiber hut was delivered to the **Harleston substation** on Tanner Williams Road in north Jackson County. Installing the hut brings us one step closer to connecting south Mississippi residents to high-speed fiber internet!

SR Connect Now Signing Up Fiber Subscribers in the Following Areas

George County:

- Agricola's Movella feeder
- Barton Agricola feeder
- Highway 613 North feeder
- Red Creek Church feeder

Perry, Wayne, and Greene counties:

- Brewer community

Jackson County:

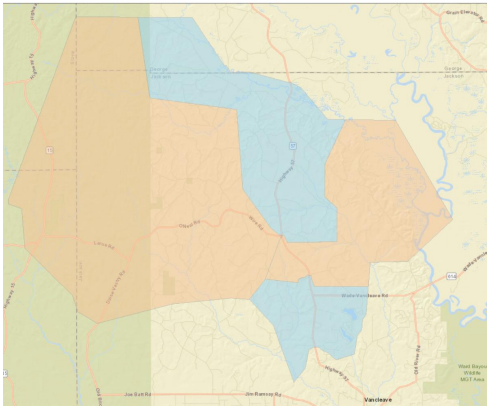
- Cartersville and Daisy communities and parts of Vestry Road
- Lake O Pines

JACKSON COUNTY

Lake O Pines, Cartersville and Daisy communities, parts of Vestry Road



■ Signing up now
■ Coming soon

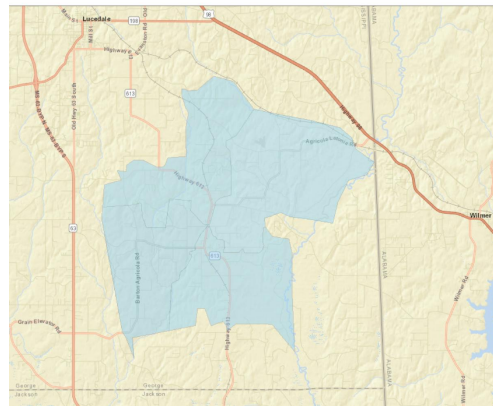


GEORGE COUNTY

Agricola substation area



■ Signing up now

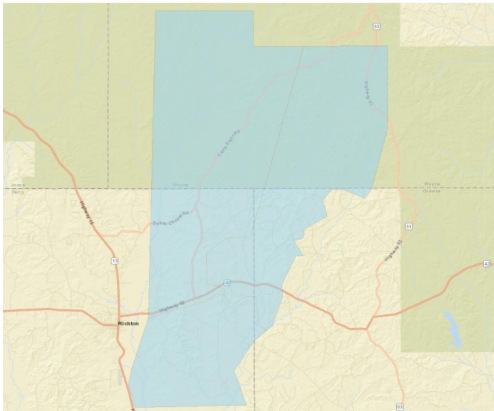


PERRY WAYNE AND GREENE COUNTIES

Brewer substation area



■ Signing up now



Call 877-272-6611 to sign up!

This is NOT an all-inclusive list of areas in the fiber phase. **Eligible subscribers will receive a postcard and/or email when it is time to sign up. You can also call 877-272-6611 to inquire if you are located inside a current fiber phase in construction. The first steps after a call to sign up include completing the service agreement and making the first payment.*

CONGRATULATIONS TO OUR AMAZON ECHO SHOW

Winners

: Shelby Delancy

Agricola substation –
Highway 613 feeder

William McRae

Agricola substation –
Movella feeder

Go Back to School with Safer Internet and the **Ultimate Wi-Fi Experience**

Upgrade to the **Ultimate Wi-Fi Experience** for only \$7/month.

With both **ProtectIQ** and **ExperienceIQ**, your family will be safer online and your devices will be better protected!



- Block harmful or inappropriate content, apps, and sites
- Set time limits on screen time and specific applications

- View use on all devices to better understand how the internet is used in your home
- Automatically block attempted visits to known harmful websites
- Monitor incoming traffic and keep hackers out
- Get notifications of blocked security threats

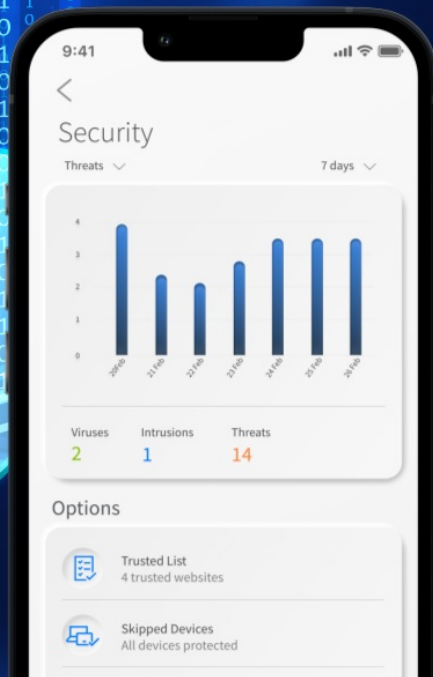
ProtectIQ Wins Best in Anti-Phishing, Network Security and Management



2022 Global InfoSec Award
Best in Anti-Phishing,
Network Security
& Management



Get Cyber Safe with **ProtectIQ®**



SR Connect subscriber **Kyle Lindley** in George County shared this on our Facebook page:

"KEEP DOING WHAT Y'ALL DO!!! This internet is an absolute life saver for our area! We can actually enjoy the amenities of everyday normal life like the rest of the world now!"

Share your thoughts by commenting on our social media pages.

Phase 1 By the Numbers

These figures show progress and expressed interest in SR Connect's Phase 1 areas designated by Singing River Electric substation and feeder.

Brewer Substation

Cochran Road Feeder
105 completed home installs

Camp 8 Road Feeder
143 completed home installs

Union Road Feeder
167 completed home installs

Aleco Substation

Highway 57 North Feeder
91 completed home installs

Lake O Pines Feeder
200 completed home installs

Agricola Substation

Movella Feeder
127 completed home installs

Highway 613 N. Feeder
177 completed home installs

Barton Agricola Feeder
113 completed service agreements

11,461 interests expressed outside of the pilot areas

Search your address and express an interest in SR Connect fiber-to-the-home service if you haven't already done so at www.singingriverconnect.com. Encourage your family, friends and neighbors to do the same!

SEARCH YOUR ADDRESS



singingriverconnect.com
(877) 272-6611
contactus@singingriverconnect.com



Copyright (c) 2022 Singing River Connect