



VIEW IN BROWSER

SR Singing River Connect



Welcome to the Singing River Connect e-newsletter!

Our goal is to keep you informed on our fiber-to-the-home pilot project. Thank you for searching your address. You are receiving this e-newsletter because you expressed an interest in SR Connect fiber service. Encourage your family, friends and neighbors to do the same.

Singing River Electric's board of directors will be monitoring the expressed interests inside and outside of the pilot areas, as well as actual signups in the pilot areas, to determine the project's success and where to expand next if the decision is made to do so.

919 (47.92%)

Interests Expressed
Inside Pilot Areas

4,285

Interests Expressed
Outside of Pilot Areas

Search your address and express an interest in SR Connect fiber-to-the-home service if you haven't already done so.

SEARCH YOUR ADDRESS

Construction Updates

We are working with the United States Forest Service's local district ranger to get expedited approval to start fiber construction in parts of SR Connect's Brewer pilot project area.



Our fiber contractors cannot begin working in these select areas until approval has been granted. We will keep you updated on this approval process as we learn more.



Fiber huts were delivered to Singing River Electric's Agricola, Aleco and Brewer substations on July 15-16. These buildings will house the equipment needed to provide high-speed internet to subscribers in our three pilot areas.



SRE Project Engineer Brandon Welford recently met with make-ready engineering contractors at the Brewer substation. Their role is to inspect poles for fiber installation.



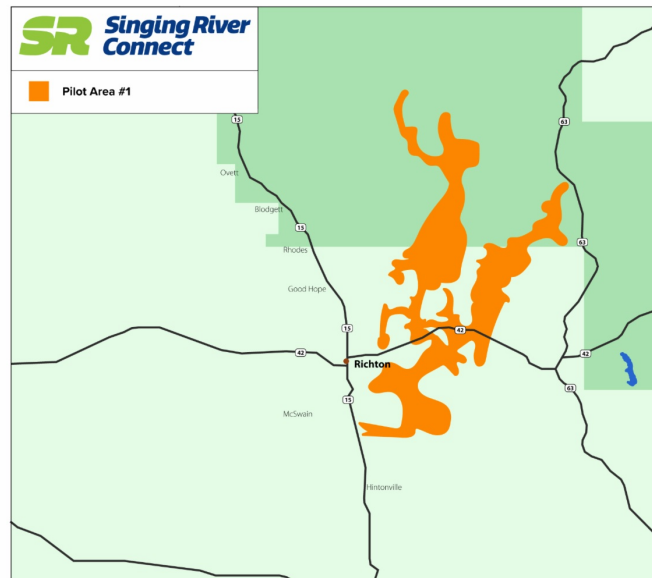
Equipment needed for the fiber ring and fiber-to-the-home pilot projects is being delivered, namely this framing hardware to install fiber on the power poles.

Contractors ran pipe underground from Scott Road to Singing River Electric's Lucedale office to house fiber for the fiber ring and SCADA system during the week of July 12. This fiber will also supply internet service for the pilot project areas.

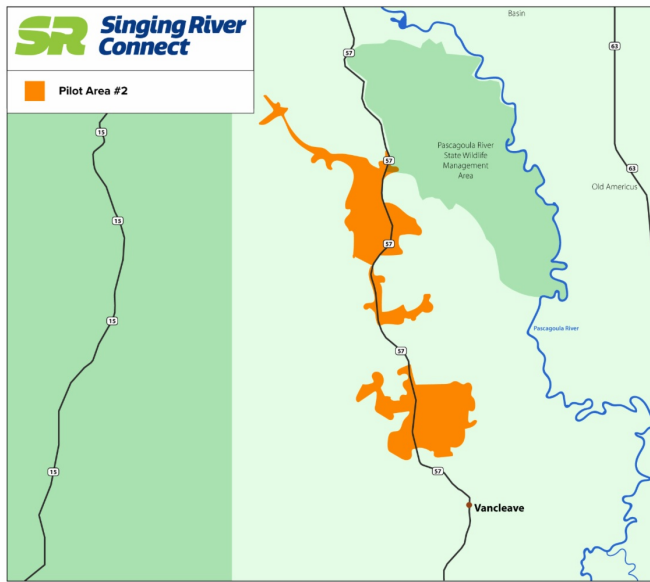
Three Pilot Areas Cover SRE Members in Five Counties

SR Connect's three pilot projects represent Singing River Electric's three geographical districts and will reach fiber subscribers in five southeast Mississippi counties. The areas were chosen because they are mostly unserved or underserved for fiber and because they are located along the fiber ring being constructed connecting all SRE offices and substations.

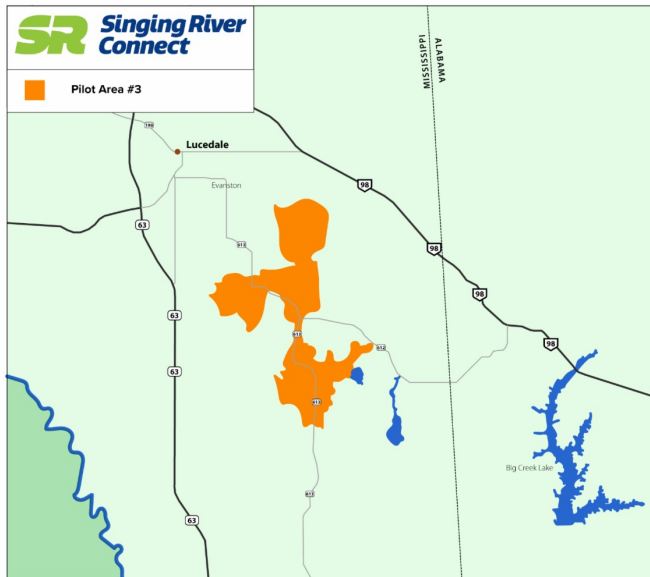
This is an initial effort. Fiber expansion depends on the success of these pilot projects, and results are promising so far. Thank you for expressing your interest in fiber service.



SRE Brewer substation is scheduled to receive fiber service in late September or early October 2021.*



Parts of SRE's Aleco substation in the Vestry community are scheduled to receive fiber service in mid-to-late November 2021.*



Parts of SRE's Agricola's substation are scheduled to receive fiber service in late December 2021 or early January 2022.*

**Dates are subject to change*

Fiber-based Internet Packages

100 Mbps

Upload &
Download

\$59.95

Sign up early for free installation!

1 Gbps

Upload &
Download

\$84.95

Sign up early for free installation!

Not sure how much speed you need?

CLICK BELOW TO LEARN MORE



singingriverconnect.com
(877) 272-6611
contactus@singingriverconnect.com



Copyright (c) 2021 Singing River Connect